

SE Air Knife

Efficient drying of polymer strands



Your systems supplier for all pellet shapes

SE Air Knife

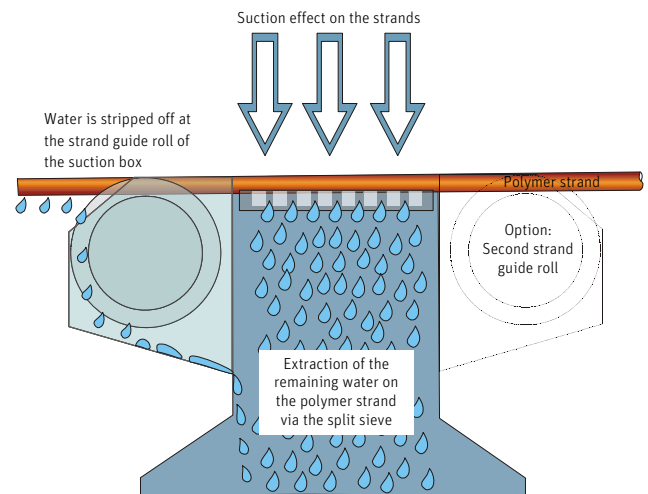
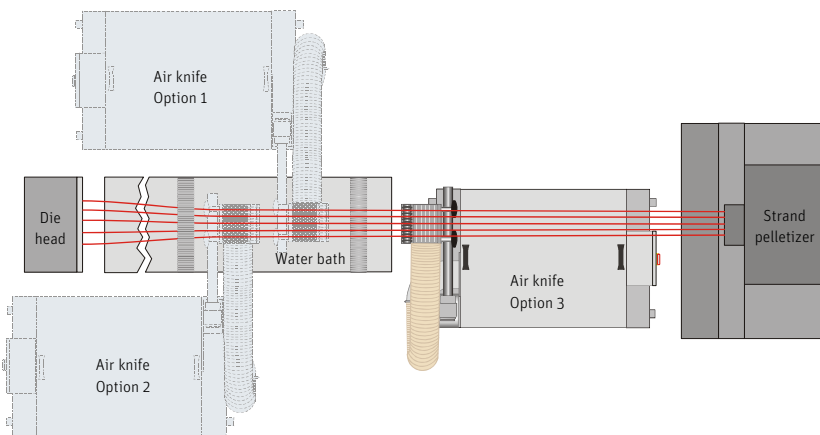
The SE series air knives are designed to efficiently dry the strands during pelletizing in both compound and masterbatch application. Filled and reinforced materials require effective strand drying to minimize the residual moisture of the pellets, reduce dust and avoid premature wear of the cutting tools. Additional benefits of the continual development of the SE family are:

- Effective dehumidification of suction air
- Insensitive to dust and dirt
- Wear protection (optional)

The air knife SE has a high suction rate and allows very flexible and variable positioning of the suction box. Both height and inclination are adjustable, positioning above or behind the cooling trough (see photos and diagram below).

YOUR BENEFITS:

- High suction power for low residual moisture values
- Dehumidification of suction air and water recirculation
- Targeted water return via pump
- Low sound emission < 80 dB(A)
- Low operating cost
- Easy start-up (>plug & run<)

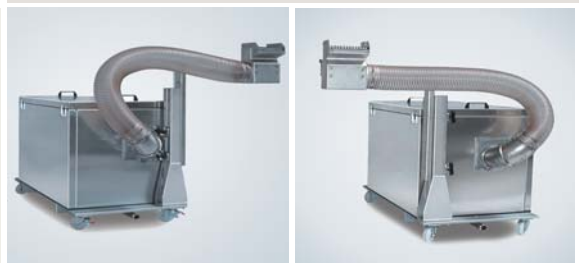


Possibilities to place the air knife – also possible on the other side!

	SE 100-2	SE 200-2	SE 400-2	SE 600-2	SE 900-2
Working width [mm]	100	200	400	600	900
Number of strands, Ø 3 mm	25	50	100	150	225
Suction air flow [m ³ /min]	10	20	40	60	90
Blower motor power [kW]	1.1	3	7.5	15	18.5
De-watering	Gravity	Pump	Pump	Pump	Pump

Technical data of air knife series SE

Principle of the suction process



Variable positioning of the suction box

