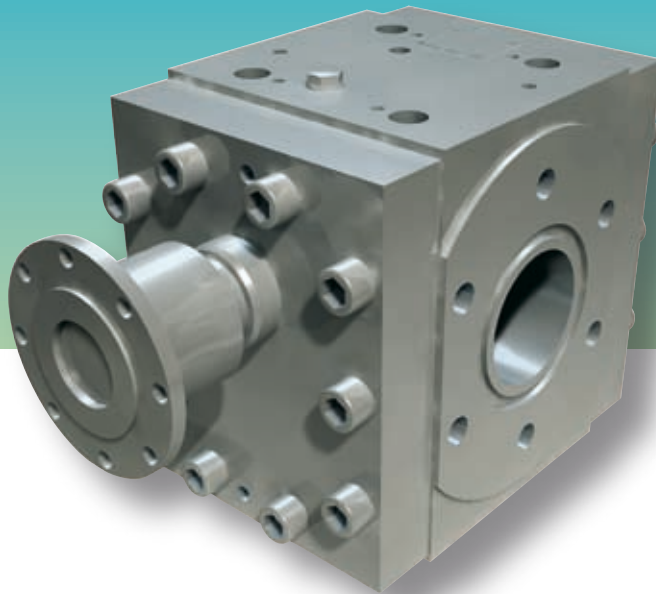


extrex[®] GP / HP / HV



A range of typical pumping media:

- Acrylonitrile-butadiene-styrene
- Cellulose acetate
- Ethylene vinylacetate
- HD/HMW polyethylene
- LD/LLD polyethylene
- Polyamide 6/66
- Polybutene
- Polybutylene Terephthalate
- Polycarbonate
- Polyetherketone
- Polyethylene Terephthalate
- Polyisobutylene
- Polymethylmethacrylate
- Polypropylene
- Polystyrene and HIPS
- Thermoplastic elastomers
- Various bonding agents
- Other polymers upon request

Gear pumps for thermoplastics

Extrusion plants need extremely reliable units with high pumping consistency and a configuration to suit each application. The modular design of extrex[®] gear pumps makes light work of meeting diverse requirements.

The advanced model series is set apart by the established quality features, extreme reliability and long service life one would expect of a Maag Pump Systems gear pump. All extrex[®] gear pumps have optimised flow channel geometry, specially heat-treated shafts and an innovative bearing design that enables higher speeds and flow rates.

There are three types to choose from:

- **extrex[®] GP** for a broad application range
- **extrex[®] HV** oversquare with a 25% higher pumping volume
- **extrex[®] HP** for differential pressures of up to 400 bar

Your benefits:

- Optimised flow channels
- High overall efficiency and minimised friction thanks to pioneering gear and bearing technology
- Low pulsation pumping even at high differential pressures
- Compact design

	extrex® GP	extrex® HP	extrex® HV
Discharge pressure in bar	to 350	to 500	to 300
Differential pressure in bar	to max. 250	to max. 400	to max. 200
Pump sizes	20 to 180	36 to 140	45 to 90
Specific volume in cm³/rev	10.2 to 3,324	15.6 to 959	57.6 to 453
Throughput range in kg/h	4 to 15,000	10 to 6,000	80 to 4,000

design values, application range may differ depending on product

Theoretical conveying capacities:

Applications	Polypropylene		Polyethylene		Polyester		
Density [g/cm³]	0.73		0.75		1.15		
extrex® GP Pump size	Specific volume [cm³/rev]	Maximum capacity in kg/h at viscosities of					
		200 Pas	5000 Pas	200 Pas	5000 Pas	150 Pas	1500 Pas
28	10.2	131	69	135	60	178	90
36	25.6	279	146	281	26	366	185
45	46.3	436	229	430	192	554	280
56	92.6	757	398	729	326	931	469
70	176.0	1,244	654	1,172	524	1,480	746
90	371.0	2,228	1,170	2,047	915	2,551	1,286
110	718.0	3,784	1,988	3,408	1,524	4,205	2,120
140	1,493.0	6,727	3,534	5,914	2,645	7,210	3,635
180	3,224.0	12,338	6,481	10,577	4,730	12,733	6,420
extrex® HP Pump size	Specific volume [cm³/rev]	Maximum capacity in kg/h at viscosities of					
		200 Pas	5000 Pas	200 Pas	5000 Pas	150 Pas	1500 Pas
36	15.6	170	89	171	77	223	113
45	28.8	271	143	267	120	345	174
56	59.5	486	255	469	210	598	302
70	113.0	779	420	753	337	950	479
90	231.0	1,387	729	1,275	570	1,588	801
110	457.0	2,409	1,265	2,165	970	2,676	1,350
140	959.0	4,321	2,270	3,799	1,699	4,631	2,335
extrex® HV Pump size	Specific volume [cm³/rev]	Maximum capacity in kg/h at viscosities of					
		200 Pas	5000 Pas	200 Pas	5000 Pas	150 Pas	1500 Pas
45	57.6	691	363	556	249	690	348
56	116.0	948	498	914	409	1,166	588
70	227.0	1,605	843	1,512	676	1,909	962
90	453.0	2,720	1,429	2,499	1,118	3,115	1,571

Application limits:

Viscosity: to 30,000 Pas

Temperature: to 350 °C

Inlet pressure: to 120 bar

Technical specifications:

Housing & cover: alloy steel

Gear shafts: tool steel

Bearing: tool steel

Shaft seals: alloy steel

Pump heating: electric/liquid

Accessories:

- Base and base frame
- Adapter flange
- Sensors
- Controllers, expac® complete solutions
- Drives

Options:

- Defined tolerance classes
- Wired heating cartridge fully attached to connector
- Liquid heating with interconnecting holes
- Fusing pressure/temperature sensor holes in housing
- Choice of materials for every application
- Cooler for shaft seals
- Special seal types

Switzerland

Maag Pump Systems AG
Aspstrasse 12
8154 Oberglatt
Schweiz
Phone +41 44 278 82 00
Fax +41 44 278 82 01
welcome@maag.com
www.maag.com

Singapore

Maag Pump Systems Pte Ltd.
25 International Business Park
04-73 German Center
Singapore 609916
Phone +65 6562 8720
Fax +65 6562 8729
MaagSingapore@maag.com
www.maag.com

USA

Maag Pump Systems Inc.
1500 Continental Boulevard
Charlotte, NC 28273
USA
Phone +1 704 716 9000
Fax +1 704 716 9001
MaagAmericas@maag.com
www.maag.com

France

Maag Pump Systems SAS
111, Rue du 1er Mars 1943
69100 Villeurbanne
France
Phone +33 4 72 68 67 30
Fax +33 4 72 68 67 31
MaagFrance@maag.com
www.maag.com

Germany

Maag Pump Systems GmbH
August-Kümpers-Strasse 9
48493 Wetrtingen
Deutschland
Phone +49 2557 92 80 0
Fax +49 2557 92 80 20
MaagGermany@maag.com
www.maag.com

China

Maag Pump Systems Shanghai
Room 1204A, Silver Tower
218 South Xi Zang Road
200021 Shanghai, China
Phone +86 21 6334 3666
Fax +86 21 6334 3336
MaagChina@maag.com
www.maag.com

Italy

Maag Pump Systems S.r.l.
Viale Romagna 7
20089 Rozzano (MI)
Italia
Phone +39 02 575 932 1
Fax +39 02 575 932 32
MaagItaly@maag.com
www.maag.com

www.maag.com